

“SUDOE Stop CO₂” project partners gathered in Lisbon for the Steering Committee

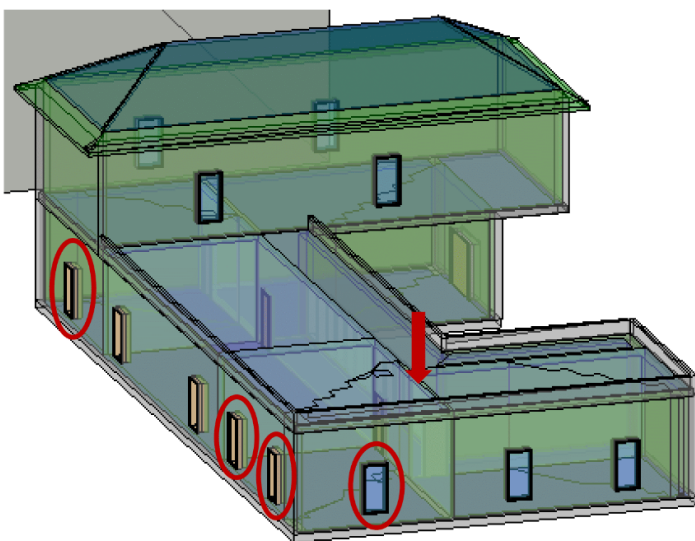
The SUDOE Stop CO₂ Steering committee took place in Lisbon on 18th and 19th June. The project partners were hosted by Adene, the Portuguese energy agency. After the welcome greetings to the project partners, Adene representatives presented the agency and the projects that are carried out. The first day of the committee meeting ended with a visit to the "Entrecampos" Station in Lisbon, a very large infrastructure capable of having thousands of travelers a day.



The second day started with the presentations of the Work Packages by the project partners. The meeting focused on management and communication activities. CETENMA presented the evaluation system and the results obtained through the first nine evaluations. In the afternoon, the representatives of the Engineering Faculty of Porto presented a study on innovative management solutions using digital tools. Then the French partner "Tipee" presented the BIM model for transport stations. The Steering committee ended with the "Alec" presentation about the preparation of public awareness campaigns and workshops.

It is time for WP3: Digital tools for energy efficiency management

FEUP presented the deliverables of Work package 3. The final report presents an innovative methodology developed from the research and knowledge sharing for the improvement of the energy management of stations corresponding to the specific objective number 2, consisting of stimulation and innovation transfer, its evaluation and application to the energy performance improvement of buildings linked to the transportation sector.

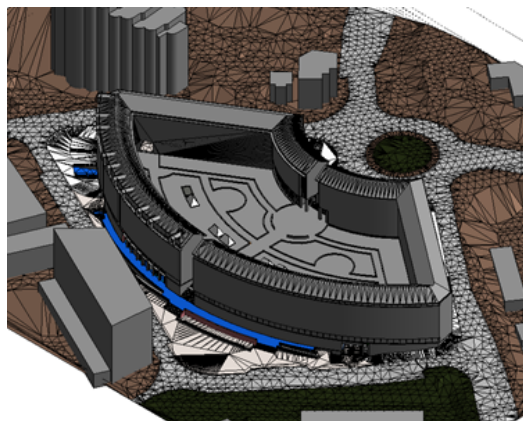


The results include the definition of BIM model requirements, including information transfer protocols and the Level of Development (LOD) to be adopted. This methodology allows for an accurate decision making process, to identify the most adequate solutions to apply in energy retrofitting projects, including the entire process from data acquisition, energy modeling, software interoperability and building energy analysis

Torrelavega Bus Station gets an energy efficiency solution plan

Applying the BIM Methodology on the 3D model, our partner Carbone 64 has presented several alternatives to improve energy efficiency in the facility. The actions look forward to refurbishing all the lighting through a combination of new technologies and natural resources.

Now, it is time for the station manager to decide which alternative could be implemented matching available budget and priority traveler's comfort needs.



14 facilities have joined the SUDOE Stop CO2 Sustainable Station Network



Since the launch of the assessment tool fourteen transport facilities have joined our snetwork. The bus stations of the following cities have obtained their energy evaluation rate: Avilés, Elche, Gijón, Logroño, Oviedo, Palencia, Pamplona, Reinos, San Sebastian, Santander, Sevilla, Torrelavega, Vitoria, Zaragoza. The stations network will soon get new facilities such as the "Terminal Rodoviário Campo 24 de Agosto" of Porto (which it will be the first out of the Spanish territory), Barcelona Nord, Barcelona (Fabra i Puig), Cádiz, Cartagena and Santa Pola. We also expect SNCF stations in France to be part of the network in the coming months

Conference in Arkinova - France - November 20, 2018

A transnational conference will be celebrated at the sustainable construction research center ARKINOVA (Anglet/France) about energy management of buildings under the framework of the SUDOE STOP CO2 project.

Several experts on the topic of building construction and energetic refurbishment will be present in the event. Initial results of the SUDOE STOP CO2 project will be also presented



For further information :

Contact: Orestes Cendrero +34 942 032582 sudoe.stopco2@ctlcantabria.com

www.sudoe-stopco2.eu - Follow us on Facebook: **SUDOE Stop CO2.**

